



ARCHITECTURE DESIGNS  
INTERIOR DESIGNS  
LANDSCAPE DESIGNS



## INTRODUCTION

*“H E R M A S Interiors” is an architecture firm that specializes in planing,architectural designs, interior designs and delivery solutions for buildings indoor and outdoor spaces.*

We are thrilled to share with you our passion for creating beautiful, functional spaces that reflrect our client’s unique personalities and lifestyle.

At our company, we believe that great design is not just about aesthetics, but aslo about improving the quality of life for those who inhabit the spaces we create.

We take pride in our ability to transform any space into a harmonious blend of form and function, while keeping our client’s vision and preferences at the forefront of our design process.

*THERE IS NO PROJECT TOO LARGE OR TOO SMALL FOR OUR DYNAMIC TEAM!*



*THERE IS NO PROJECT TOO LARGE OR TOO SMALL FOR OUR DYNAMIC TEAM!*

*Our team leaders play an essential role in motivating and guiding our teams toward success.  
They are responsible for creating an inspiring team environment  
with an open communication culture.*

**Their duties include setting clear team goals, delegating tasks, and overseeing day-to-day operations.**

**Team leaders monitor team performance, provide coaching, and resolve any issues or conflicts.  
They recognize high performance and encourage creativity within the team.**

**With excellent communication and leadership skills,  
our team leaders lead by example, ensuring effective collaboration and goal achievement**



**PROJECTS MANAGER**  
**ALI SALMAN**



**CHIEF EXECUTIVE OFFICER**  
**MOHAMED ABDEL HAKIM**





## WHAT DO WE OFFER

### | DESIGNING

#### - ARCHITECTURAL:

##### \* Architectural concepts.

- Concept Sketch.
- Zoning & Circulation.
- Studies.

##### \* Planning and Master Layouts.

- Planning design.
- Layout Design and studies.
- Urban Design.

##### \* Architectural Drawings.

- Architecture design.
- For Construction drawings.
- Mixed-Use building design.
- Architecture Presentation.

##### \* Facade Designs.

##### \* Renovation Works.

#### - LANDSCAPE:

##### \* Gardens Design.

- SoftScape.
- HardScape.
- Pergolas.
- Outdoor Furniture.

##### \* Pool Design.

##### \* Land-mark and Signs.

##### \* Site Utilization.

#### - INTERIOR DESIGN:

##### \* Residential and Hospitality.

- Villas. - Palaces.
- Hotels. - Apartments.
- Lounges. - Halls & Lobbies.

##### \* Administrative Designs.

- Offices. - Work-spaces.
- Conference Halls.
- Meeting Rooms.
- Control Rooms.

##### \* Commercial and Retail.

- Shops. - Stores.
- Warehouses.
- Showrooms.

##### \* Furniture Designs.

- Kitchens.
- Dressing Rooms.
- Walking Closets.
- Bedrooms.
- Majlis.
- Receptions and living rooms.
- Offices and Workstations.

### | CONSULTATION

#### - FULL PROJECTS CONSULTATION:

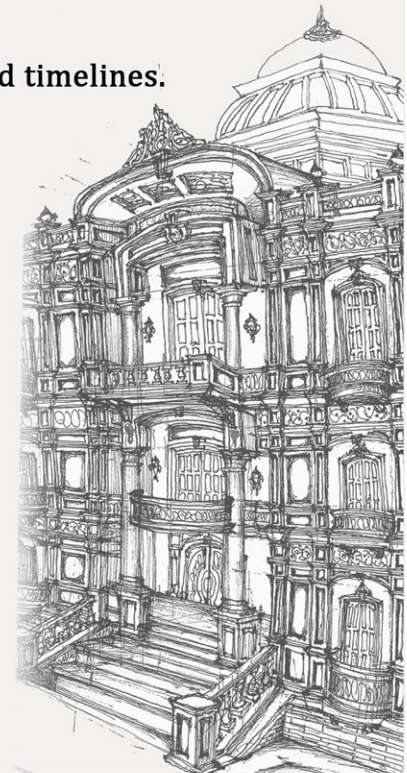
- \* Observation of ongoing construction projects.
- \* Permanent or periodic supervision.
- \* Supervise- Revise all construction and shopdrawing drawings.
- \* Solving Problems.

#### - MANAGEMENT SERVICES:

- \* Guide the development process.
- \* Schedule the construction phases.
- \* Coordinating contractors, vendors and timelines.

#### - MASTER PLANNING:

- \* Urban development.
- \* Site analysis.
- \* Analyse vehicular circulation around and access to the site.
- \* Building information.







## WHAT DO WE OFFER

### | **TURN-KEY and FIT-OUT**

#### - **FINISHING:**

- \* Technical Drawings.
- \* Walls customization.
- \* Windows and doors customization.
- \* Flooring and Tiles Laying.
- \* Plastering and Painting.
- \* Customised Ceilings.
- \* Plumbing fixtures and installation.
- \* HVAC.
- \* Electricity fixtures and installation.
- \* Lighting fixtures.
- \* Supplying and install decorative materials.

*And any other things we can take care of...*

#### - **FURNISHING:**

- \* Furniture manufacturing and supplying.
- \* Domestic appliances.
- \* Curtains / blinds.
- \* Kitchen utensils.
- \* Bedding.
- \* Lighting system.
- \* Sound system.
- \* Carpets.

*And any other things we can take care of...*

### | **EXHIBITIONS AND EVENTS**

#### - **STANDS and BOOTHS:**

- \* Designing.
- \* Execution and Finishing.
- \* Supplying materials.
- \* Advertising and Marketing.
- \* Supplying entertainment.

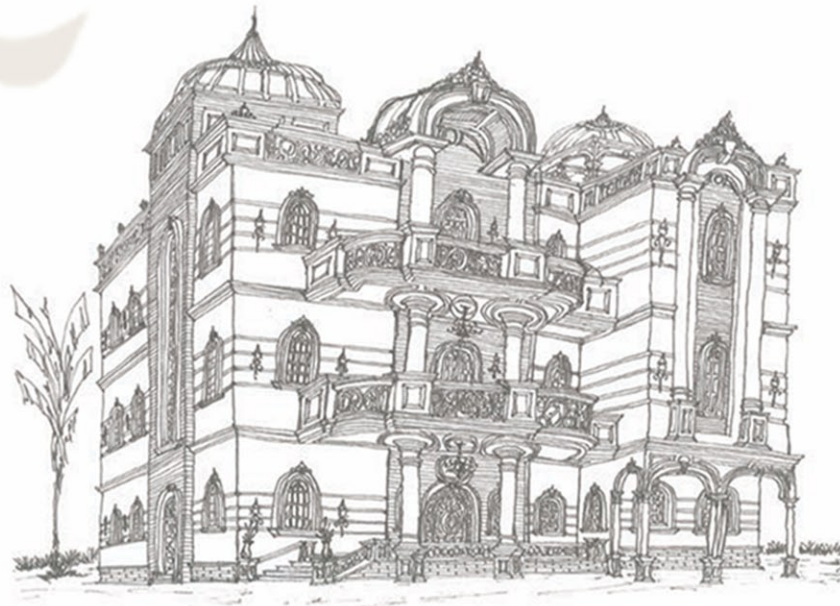
#### - **EVENTS:**

- \* Conceptualizing Event Themes and Objectives.
- \* Creating Comprehensive Events Plans.
- \* Coordinating Logistics, Vendors, and Timelines.
- \* Designing and executing event layouts and setups.
- \* Producing multimedia materials.





# Architecture



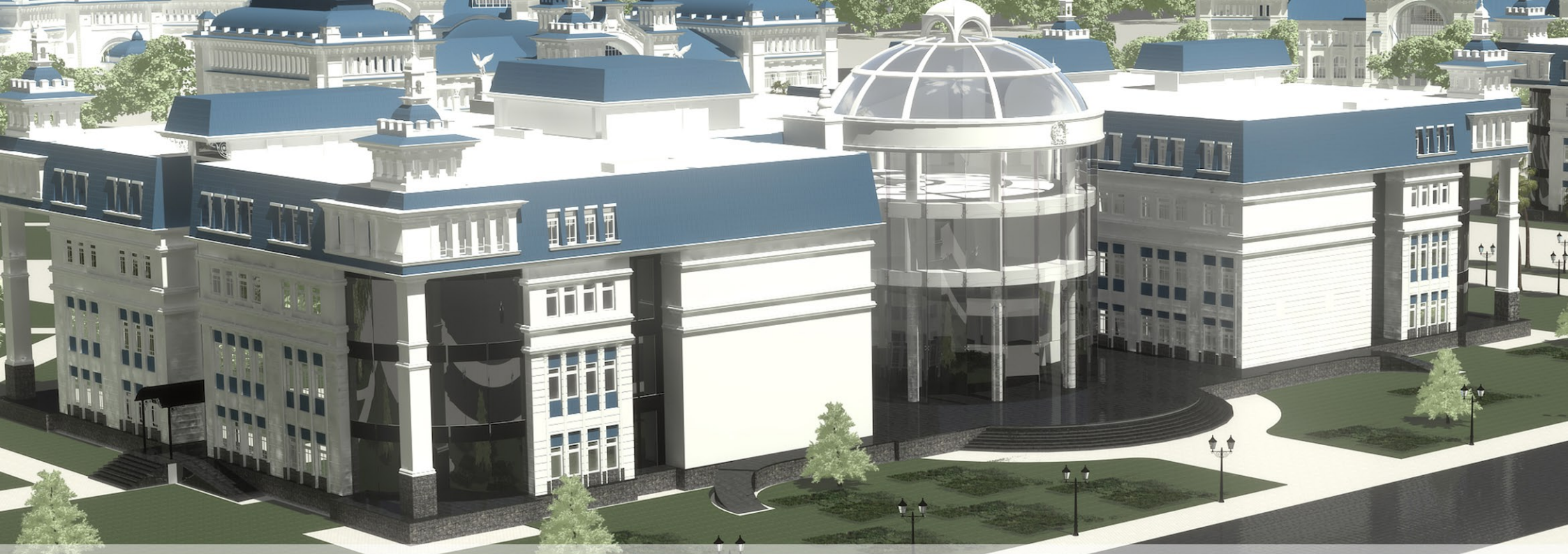


# SINAI UNIVERSITY

*FACULTY of Engineering and IT Building*







**SINAI UNIVERSITY**  
*FACULTY of Engineering and IT Building*





# SINAI UNIVERSITY

*FACULTY of Engineering and IT Building*





## DESIGN



During pre-construction, the project is fully programmed from all aspects of budgeting and pricing to schedule and project execution.

As part of our pre-construction services we evaluate every aspect of the project and make suggestions based on what we feel to be the most practical and efficient approaches.

## DESIGN



Creative designers, talented and qualified architects and engineers supported by trained staff to make custom designs for architecture projects ..

## EXECUTION



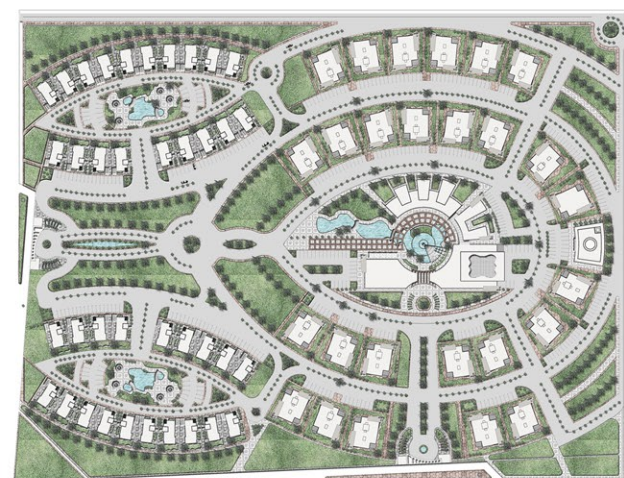
Our evaluation includes the availability of materials and labor, time requirements for procurement, installation and factors related to cost and the cost of alternative design or materials.

Sinai University Student dorms

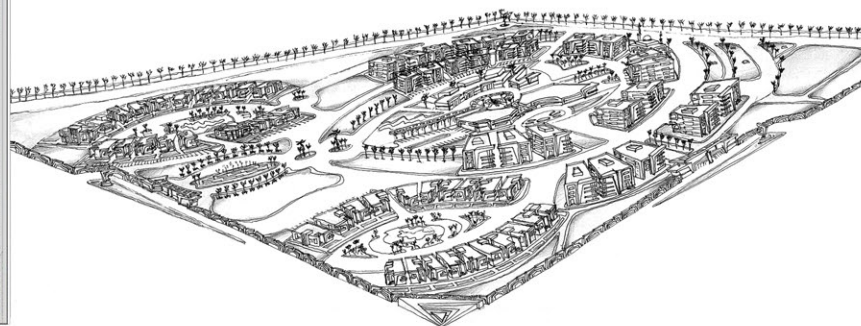




“The harmonious compound design blends the best of both worlds: spacious villas and modern apartments set amidst beautifully landscaped surroundings. The villas, with their elegant architecture, offer privacy and tranquility, while the apartments provide contemporary living spaces. Residents can enjoy lush greenery, communal gardens, and recreational areas, creating a balanced and inviting environment.”



## NARELLA COMPOUND DESIGN PROPOSAL







**“Just another day of villa life – living like royalty, one swim at a time.”**



# RENOVATION PROJECT

Villa Extended and Renovated to modern style

AS BUILT



AS BUILT



*Throughout construction our team coordinates, manages and supervises all activities to ensure that each project is completed safely and professionally, and is built in accordance with the contract documents.*

At HERMAS architects, "Building Excellence" is the heart of what we do and nowhere is it more important, of seen more clearly, than during the construction phase of a project.



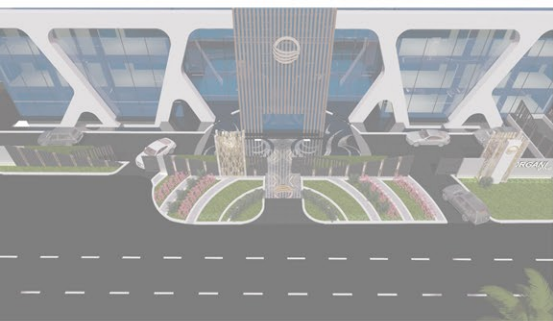
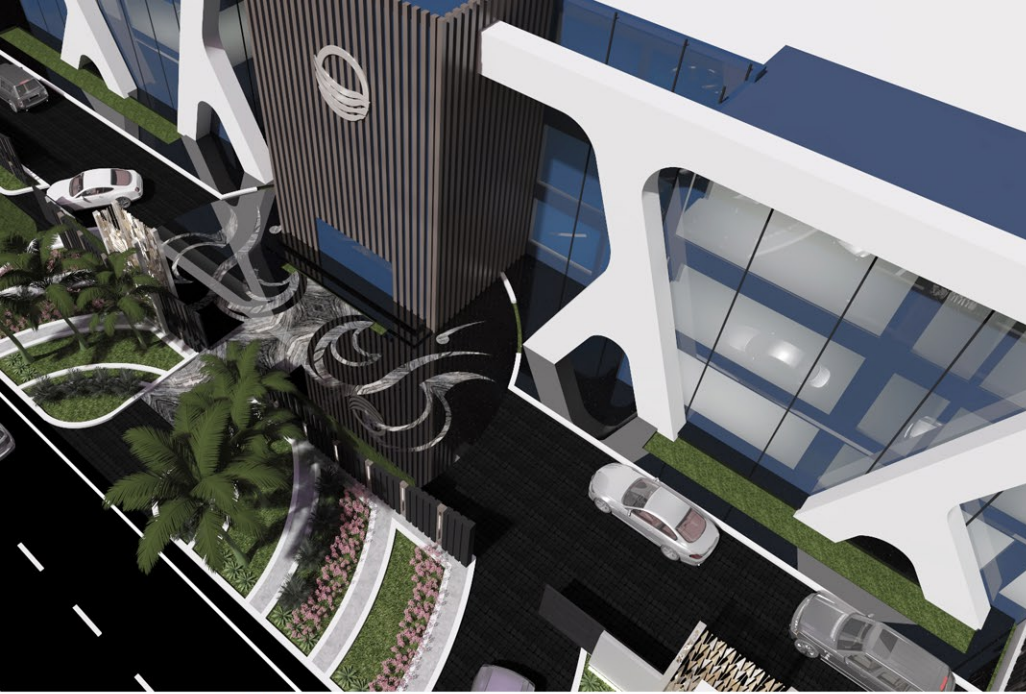




Good design is timeless, and classic architecture embodies that ideal. Its beauty and elegance stand the test of time .









# Architectural Project

## Luxury Palace





# Architectural Project

## Luxury Palace





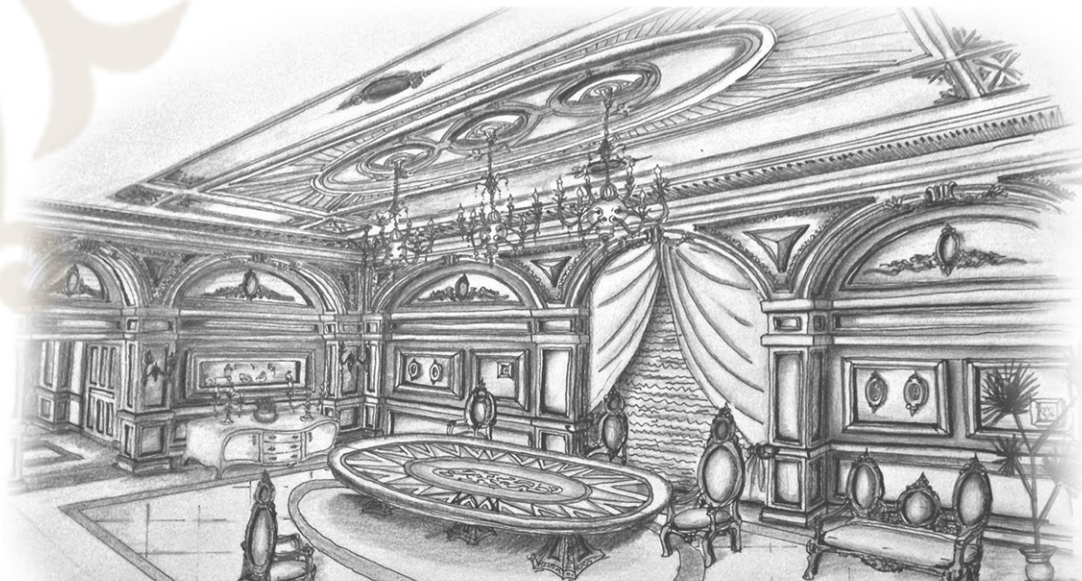


**YOUR SLICE OF HEAVEN**





# Interior Design











*Our team brings more than 14 years of consultations and interior design experience including residential and commercial projects, new builds & remodeling, as well as artful styling.*

**BEFORE**

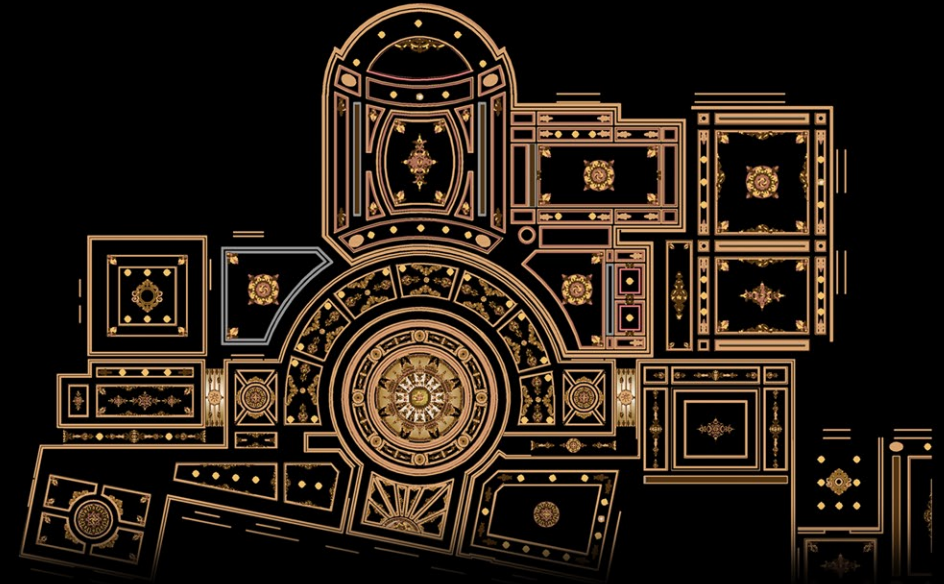


**AFTER**



We marry our deep knowledge of interiors, art and architecture with passion for creating exquisite spaces that reflect the tastes and lifestyles of our clients.

There is no project too large or too small for our dynamic team.











*"The details are not the details, they make the design."*



# Dressing Room

OAK massive wood



Different way for Bathrooms



# Luxury Bedroom



*Your bedroom should be a place where your worries melt away and your dreams come alive."*



# Luxury Lobby



*A classic lobby should exude elegance and sophistication, creating a welcoming atmosphere for anyone who enters. Remember, the details matter, and a well-designed lobby can leave a lasting impression!*





*Our team of experienced architects have a wealth of knowledge and expertise in a variety of design styles, from contemporary to traditional, and everything in between.*



*We understand that every project is unique, and we work closely with our clients to create customized solutions that meet their specific needs and exceed their expectations.*













HERMAS  
INTERIORS



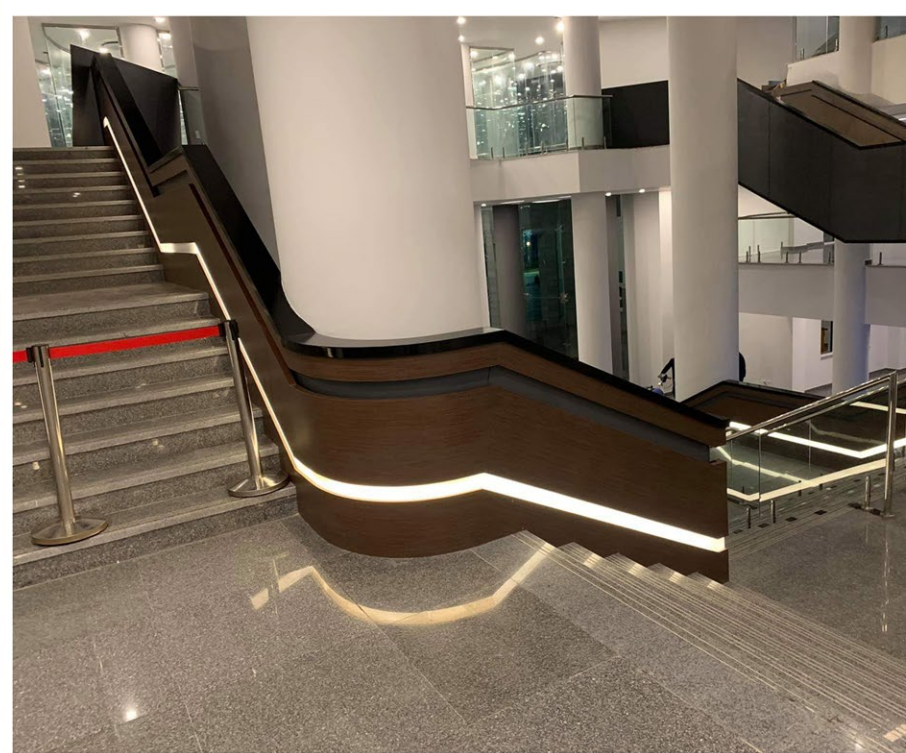






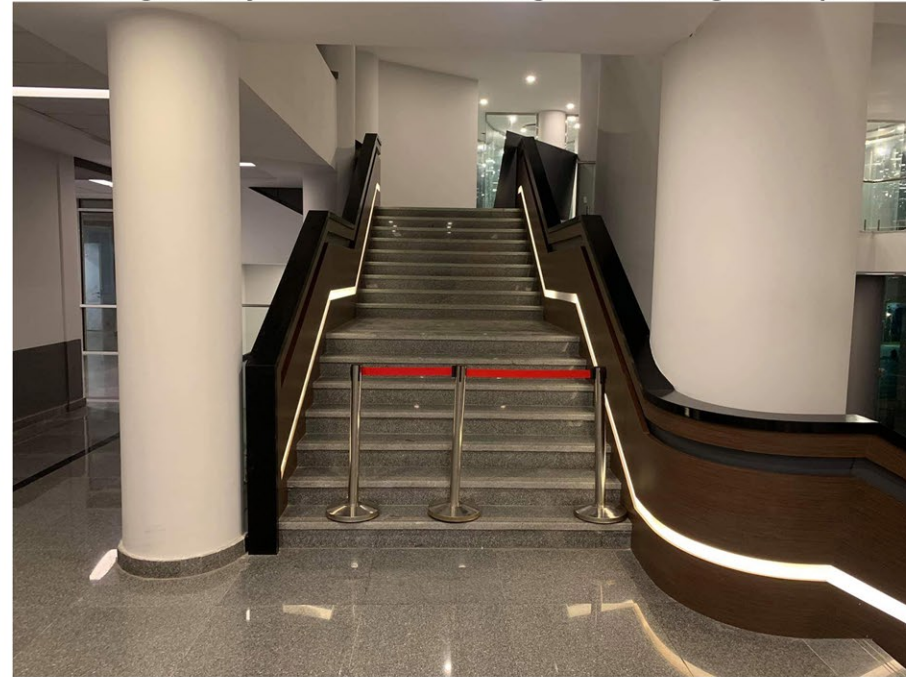






## **Entrance Lobby**

*Design elements, such as comfortable seating, natural light, and lush greenery, create a welcoming and calming atmosphere.*







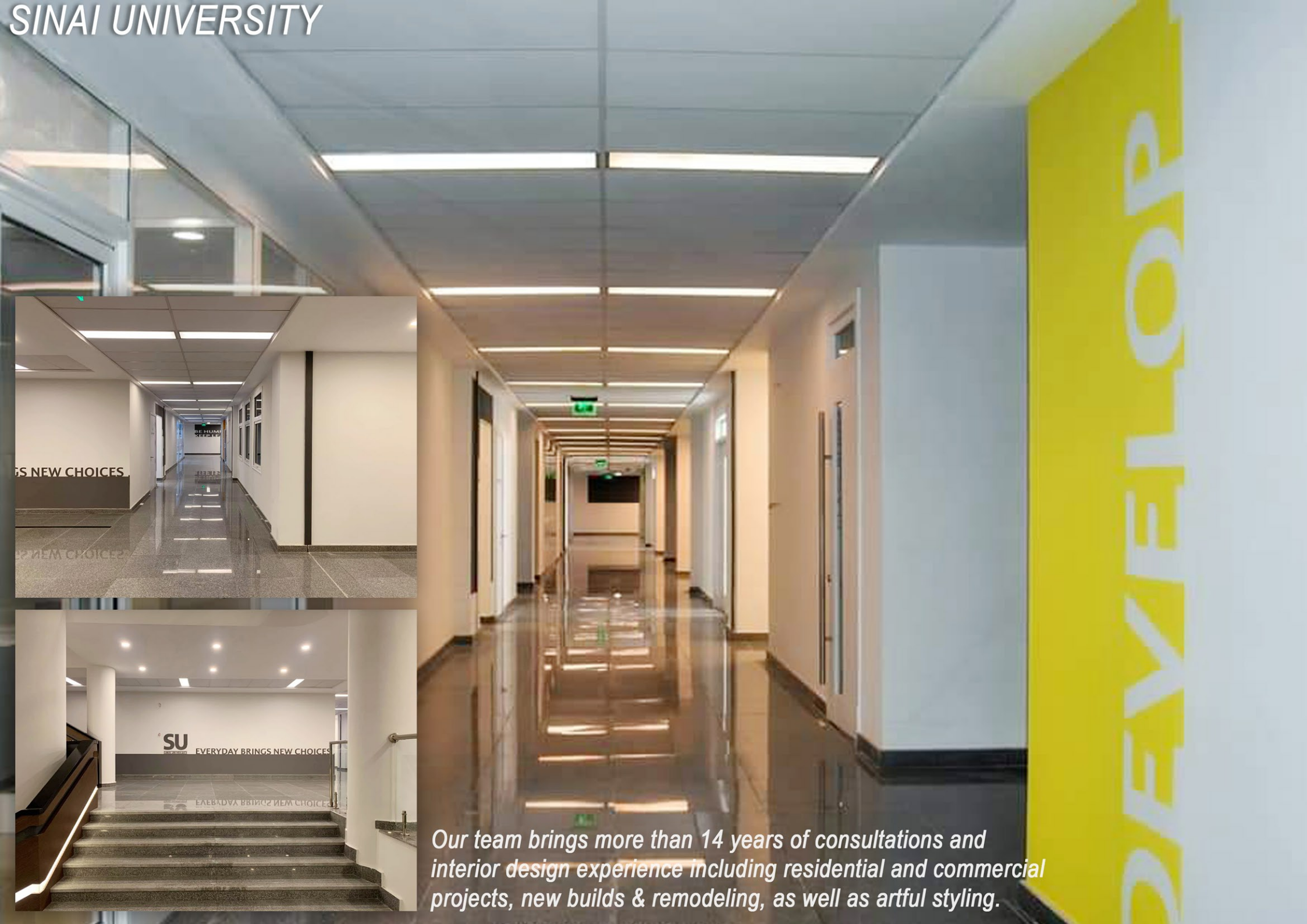
## SINAI UNIVERSITY

### Lecture Halls

*The dimensions of the seating tiers or trays must allow for easy movement behind the seats. Effective lecture hall design considers acoustics, sightlines, and ergonomic seating arrangements to enhance the learning experience.*







*Our team brings more than 14 years of consultations and interior design experience including residential and commercial projects, new builds & remodeling, as well as artful styling.*



*The high-quality materials used in the construction of the furniture in this conference room ensure durability and longevity, making it a wise investment for any business.*



*At our firm, we pride ourselves on our ability to seamlessly integrate design and execution, ensuring that every detail is carefully considered and expertly executed.*







**While design is the art of conceptualizing and planning a space, execution is the process of bringing that design to life.**







Designing Spaces, Creating Memories



















*"The details are not the details, they make the design."*







EXECUTION



DESIGN

*While design is the art of conceptualizing and planning a space, execution is the process of bringing that design to life.*





*Stepping into a classic interior design scene is like stepping back in time to an era of opulence and grandeur, where every detail is thoughtfully considered and every element exudes a sense of timeless beauty and grace.*





## MAJLIS

A majlis is not just a room; it's a place where stories are shared, laughter echoes, and hearts connect.























# Landscape Design







*Swimming Pool Island*

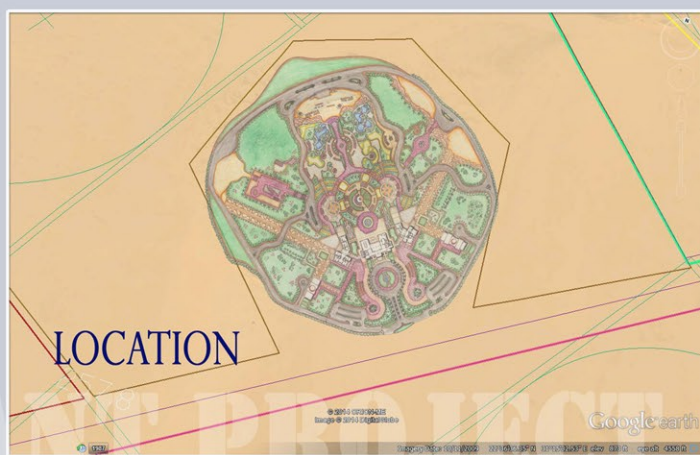




Embrace sustainable landscaping by using native plants and drought-tolerant species. Curate a welcoming entryway with pathways, lighting, and well-placed plants. Define outdoor living areas think seating spots, dining spaces, and relaxation corners.







## PROJECT ELEMENTS & BLOCKS

RECEPTION & MAJLIS BLOCK

VVIP VILLA & VIP VILLA

SERVICES BLOCK

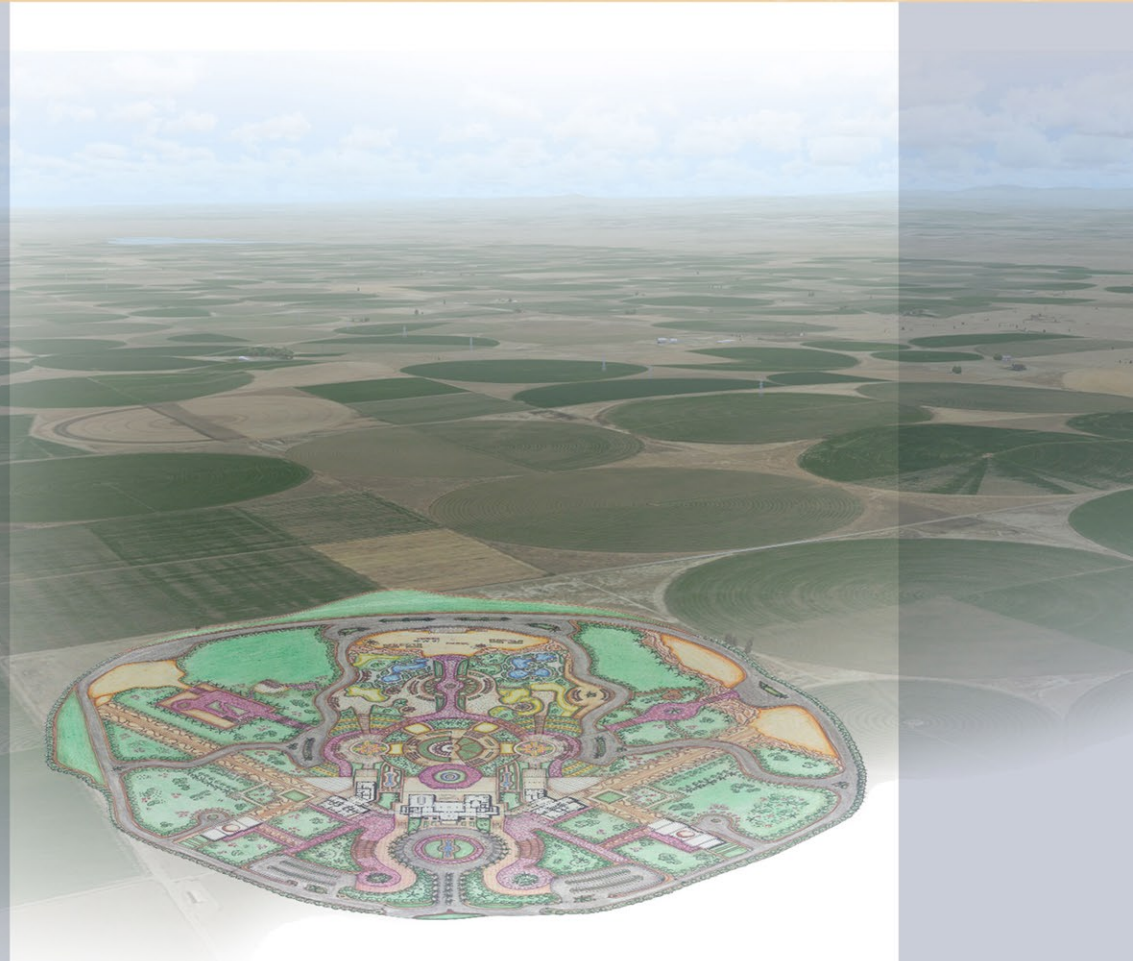
CARS PARKING

LANDCAPE - HARDSCAPE AREAS

FOLLOW UP AREAS

MAIN AND SECONDARY ROADS

## LAYOUT MODEL











PRIVATE VILLA SWIMMING POOL AND LANDSCAPE





THANK YOU

For considering our interior design company for your next project.

We look forward to the opportunity to work with you  
and create a space that you will love for years to come.





ARCHITECTURE DESIGNS  
INTERIOR DESIGNS  
LANDSCAPE DESIGNS



---

[www.hermasinteriors.com](http://www.hermasinteriors.com)

+971 56 100 900 4

Tamani Arts offices Building, Al Asayel st., floor 12 - office # 1242-1244  
Business Bay, Dubai, UAE